

**WHEATLAND SCHOOL DISTRICT  
BOARD AGENDA ITEM**

CONSENT  
 ACTION  
 REPORT/INFORMATION

---

**BOARD MEETING DATE:** April 16, 2020  
**BOARD AGENDA NUMBER:** 2.2  
**BOARD AGENDA ITEM:** Enrollment Report  
**DEPARTMENT:** Superintendent's Office  
**CONTACT PERSON:** Craig M. Guensler

---

**REPORT/PROPOSAL**  
Enrollment Report from April, 2020 will be presented to the Board for informational purposes only.

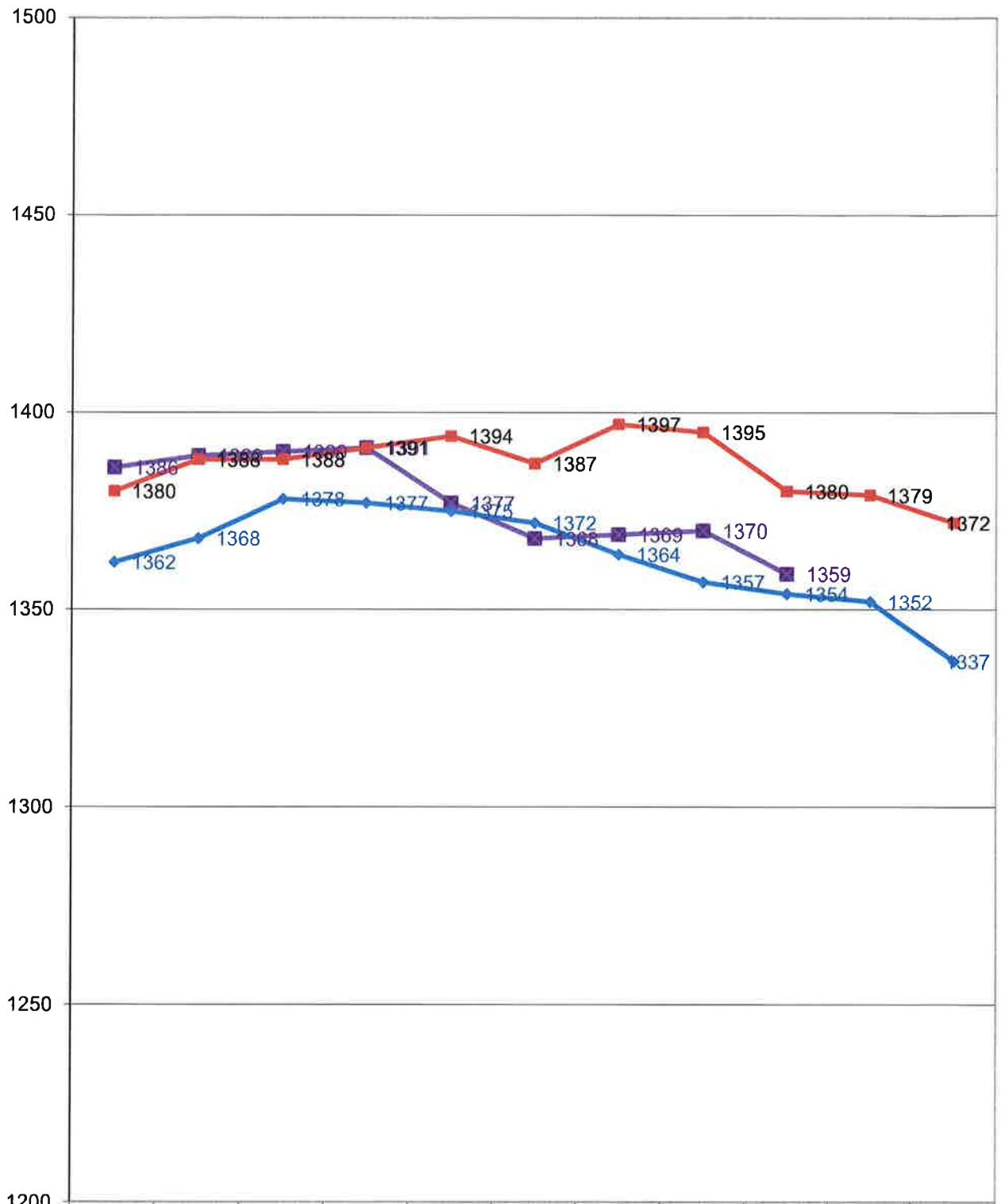
---

**SUPERINTENDENT'S RECOMMENDATION:**

None

														Peak Enrollment Count This Year
SCHOOL	K	1	2	3	4	5	6	7	8	Total	3/5/20	4/3/19		
Lone Tree	92	45	76	58	38	36				345	344	364		361
Wheatland El	105	62	72	84						323	325	320		327
Bear River					78	84	151	147	138	598	606	596		615
WCA	23	23	9	16	12	10				93	95	99		93
Non Public School										0	0	1		1
<b>Total</b>	<b>220</b>	<b>130</b>	<b>157</b>	<b>158</b>	<b>128</b>	<b>130</b>	<b>151</b>	<b>147</b>	<b>138</b>	<b>1359</b>	<b>1370</b>	<b>1380</b>		
Previous Report	1370								<b>TOTAL</b>	1359				
Difference	-11									Difference between 18/19 & 19/20	-21			
<b>PRESCHOOL</b>	4/14/20	3/5/20	4/3/19											
Wheatland PS	66	66	63											
Lone Tree PS	62	62	60											
<b>Total PS</b>	<b>128</b>	<b>128</b>	<b>123</b>											
Preschool difference between 18/19 & 19/20	5													
<b>2019/20 TOTAL</b>	<b>1487</b>				<b>2018/19 TOTAL</b>	<b>1503</b>				<b>Difference in Total Students</b>	<b>-16</b>			
with Reg Ed, NPS					with Reg Ed, NPS					between 18/19 & 19/20				
Charter & Preschool					Charter & Preschool									

### 2019-20 WSD Enrollment Chart



	1	2	3	4	5	6	7	8	9	10	11
2019/20	1386	1389	1390	1391	1377	1368	1369	1370	1359		
2018/19	1380	1388	1388	1391	1394	1387	1397	1395	1380	1379	1372
2017/18	1362	1368	1378	1377	1375	1372	1364	1357	1354	1352	1337