

**WHEATLAND SCHOOL DISTRICT  
BOARD AGENDA ITEM**

CONSENT  
 ACTION  
 REPORT/INFORMATION

---

**BOARD MEETING DATE:** December 19, 2019  
**BOARD AGENDA NUMBER:** 2.2  
**BOARD AGENDA ITEM:** Enrollment Report  
**DEPARTMENT:** Superintendent's Office  
**CONTACT PERSON:** Craig M. Guensler

---

**REPORT/PROPOSAL**  
Enrollment Report from December 12, 2019 will be presented to the Board for informational purposes only.

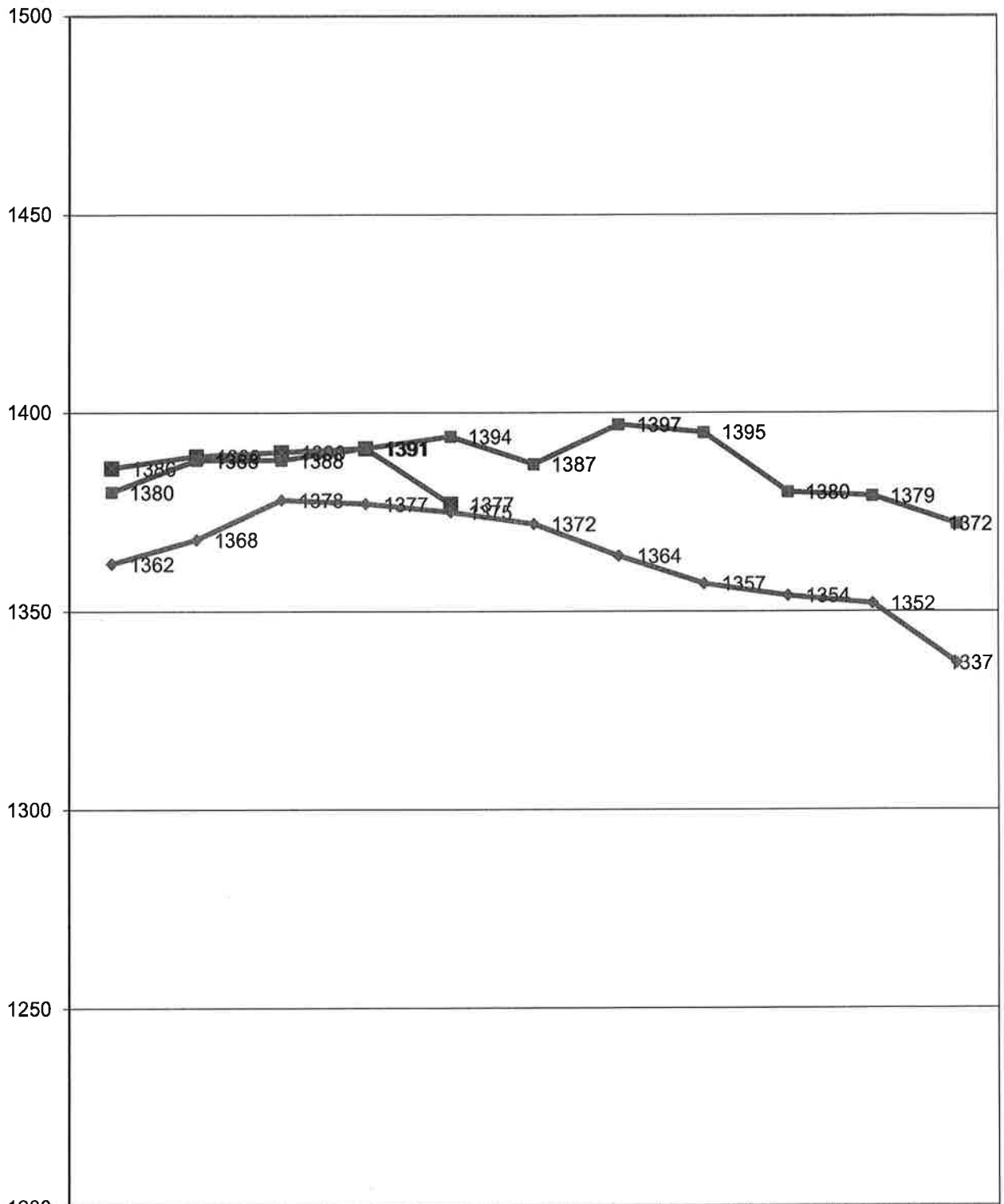
---

**SUPERINTENDENT'S RECOMMENDATION:**

None

														Peak Enrollment Count This Year
SCHOOL	K	1	2	3	4	5	6	7	8	Total	11/12/19	12/6/18		
Lone Tree	87	46	74	61	44	37				349	353	365		361
Wheatland El	104	66	73	84						327	327	326		321
Bear River					81	82	156	152	140	611	617	604		615
WCA	23	22	10	15	13	7				90	93	98		93
Non Public School		1								1	1	1		1
<b>Total</b>	<b>214</b>	<b>135</b>	<b>157</b>	<b>160</b>	<b>138</b>	<b>126</b>	<b>156</b>	<b>152</b>	<b>140</b>	<b>1378</b>	1391	1394		
Previous Report	1391								<b>TOTAL</b>	<b>1378</b>				
Difference	-13									<b>Difference between 18/19 &amp; 19/20</b>	<b>-16</b>			
<b>PRESCHOOL</b>	12/12/19	11/12/19	12/6/18											
Wheatland PS	67	66	61											
Lone Tree PS	61	62	64											
<b>Total PS</b>	<b>128</b>	<b>128</b>	<b>125</b>											
Preschool difference between 18/19 & 19/20	3													
<b>2019/20 TOTAL</b>	<b>1506</b>		<b>2018/19 TOTAL</b>	<b>1519</b>	<b>Difference in Total Students</b>					<b>-13</b>				
with Reg Ed, NPS			with Reg Ed, NPS		between 18/19 & 19/20									
Charter & Preschool			Charter & Preschool											

2019-20 WSD Enrollment Chart



2019/20	1386	1389	1390	1391	1377						
2018/19	1380	1388	1388	1391	1394	1387	1397	1395	1380	1379	1372
2017/18	1362	1368	1378	1377	1375	1372	1364	1357	1354	1352	1337