

**WHEATLAND SCHOOL DISTRICT
BOARD AGENDA ITEM**

CONSENT
 ACTION
 REPORT/INFORMATION

BOARD MEETING DATE: January 16, 2020
BOARD AGENDA NUMBER: 2.2
BOARD AGENDA ITEM: Enrollment Report
DEPARTMENT: Superintendent's Office
CONTACT PERSON: Craig M. Guensler

REPORT/PROPOSAL

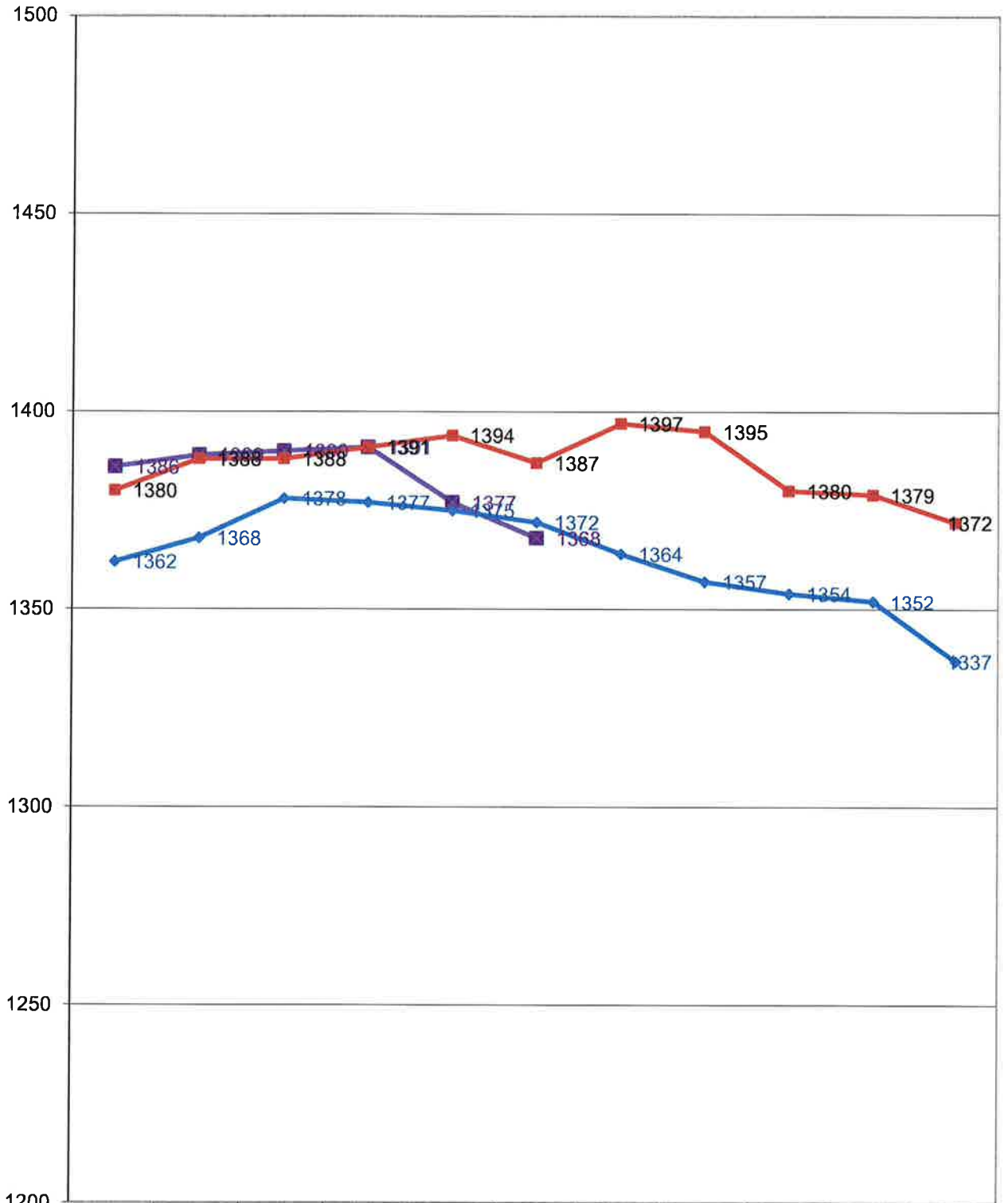
Enrollment Report from January 9, 2020 will be presented to the Board for informational purposes only.

SUPERINTENDENT'S RECOMMENDATION:

None

														Peak Enrollment Count This Year
SCHOOL	K	1	2	3	4	5	6	7	8	Total	12/12/19	1/10/19		
Lone Tree	87	46	70	60	42	37				342	349	364		361
Wheatland El	105	64	74	84						327	327	318		321
Bear River					81	82	154	152	140	609	611	608		615
WCA	24	22	10	15	12	7				90	90	97		93
Non Public School		1								1	1	0		1
Total	216	133	154	159	135	126	154	152	140	1369	1378	1387		
Previous Report	1378									TOTAL 1369				
Difference	-9									Difference between 18/19 & 19/20 -18				
PRESCHOOL	1/9/20	12/12/19	1/10/19											
Wheatland PS	68	67	62											
Lone Tree PS	60	61	62											
Total PS	128	128	124											
Preschool difference between 18/19 & 19/20	4													
2019/20 TOTAL	1497									2018/19 TOTAL 1511				Difference in Total Students -14
with Reg Ed, NPS										with Reg Ed, NPS				between 18/19 & 19/20
Charter & Preschool										Charter & Preschool				

2019-20 WSD Enrollment Chart



	1	2	3	4	5	6	7	8	9	10	11
2019/20	1386	1389	1390	1391	1377	1368					
2018/19	1380	1388	1388	1391	1394	1387	1397	1395	1380	1379	1372
2017/18	1362	1368	1378	1377	1375	1372	1364	1357	1354	1352	1337