

**WHEATLAND SCHOOL DISTRICT
BOARD AGENDA ITEM**

CONSENT
 ACTION
 REPORT/INFORMATION

BOARD MEETING DATE: November 21, 2019
BOARD AGENDA NUMBER: 2.2
BOARD AGENDA ITEM: Enrollment Report
DEPARTMENT: Superintendent's Office
CONTACT PERSON: Craig M. Guensler

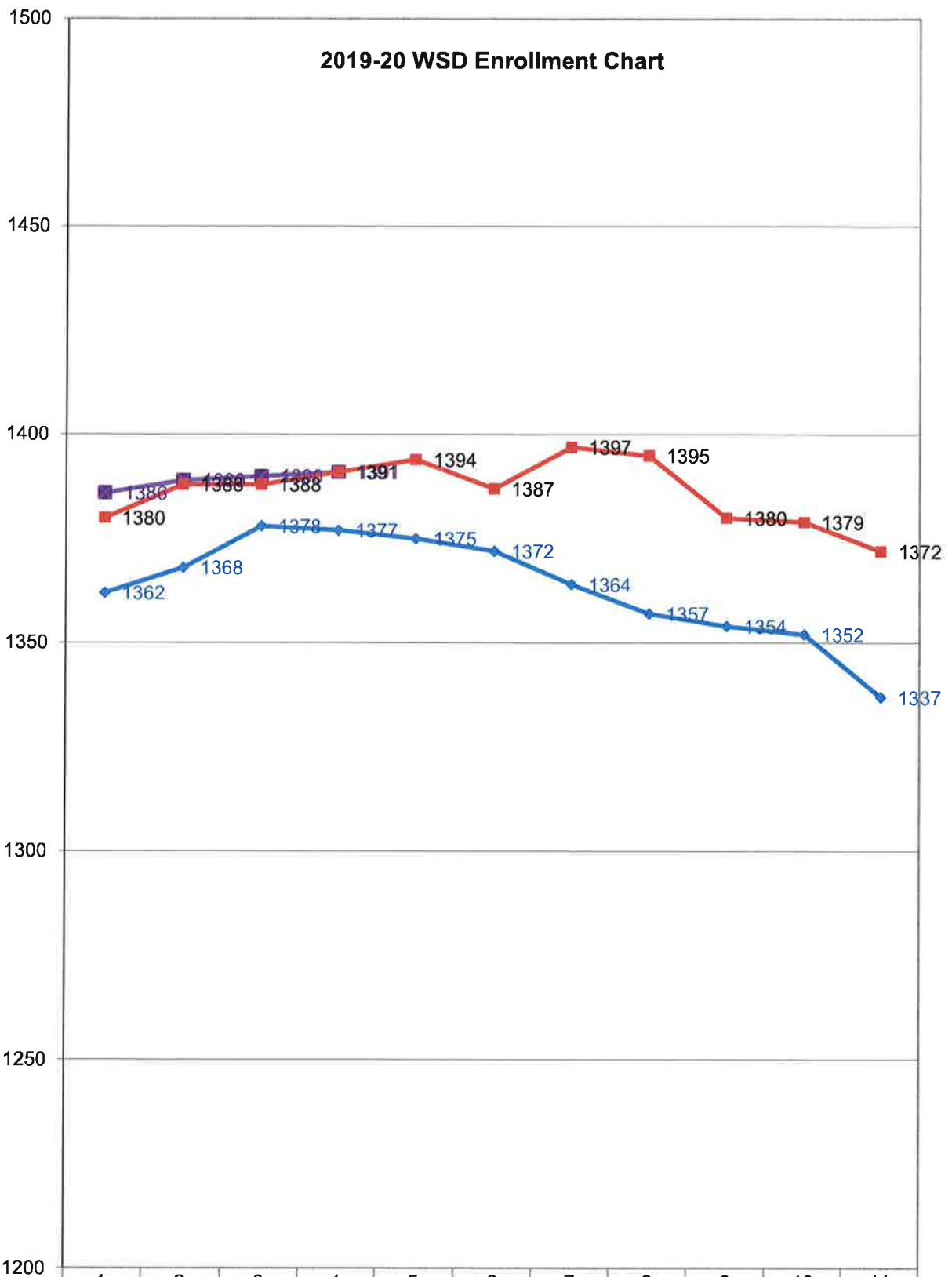
REPORT/PROPOSAL

Enrollment Report from November 12, 2019 will be presented to the Board for informational purposes only.

SUPERINTENDENT'S RECOMMENDATION:

None

														Peak Enrollment Count This Year
SCHOOL	K	1	2	3	4	5	6	7	8	Total	10/10/19	11/1/18		
Lone Tree	86	47	77	61	44	38				353	361	363	361	
Wheatland El	104	67	73	83						327	324	325	321	
Bear River					81	82	158	156	140	617	613	605	615	
WCA	23	23	10	15	15	7				93	91	97	93	
NPS		1								1	1	1	1	
Total	213	138	160	159	140	127	158	156	140	1391	1390	1391		
Previous Report	1390									TOTAL 1391				
Difference	1									Difference between 18/19 & 19/20 0				
PRESCHOOL	11-19	10-19	11-18											
Wheatland PS	66	67	62											
Lone Tree PS	62	66	63											
Total PS	128	133	125											
Preschool difference between 18/19 & 19/20	3													
2019/20 TOTAL	1519													
with Reg Ed, NPS														
Charter & Preschool														
2018/19 TOTAL	1516													
with Reg Ed, NPS														
Charter & Preschool														
Difference in Total Students											3			



2019/20	1386	1389	1390	1391							
2018/19	1380	1388	1388	1391	1394	1387	1397	1395	1380	1379	1372
2017/18	1362	1368	1378	1377	1375	1372	1364	1357	1354	1352	1337