

**WHEATLAND SCHOOL DISTRICT
BOARD AGENDA ITEM**

CONSENT
 ACTION
 REPORT/INFORMATION

BOARD MEETING DATE: February 18, 2021
BOARD AGENDA NUMBER: 2.2
BOARD AGENDA ITEM: Enrollment Report
DEPARTMENT: Superintendent's Office
CONTACT PERSON: Craig M. Guensler

REPORT/PROPOSAL

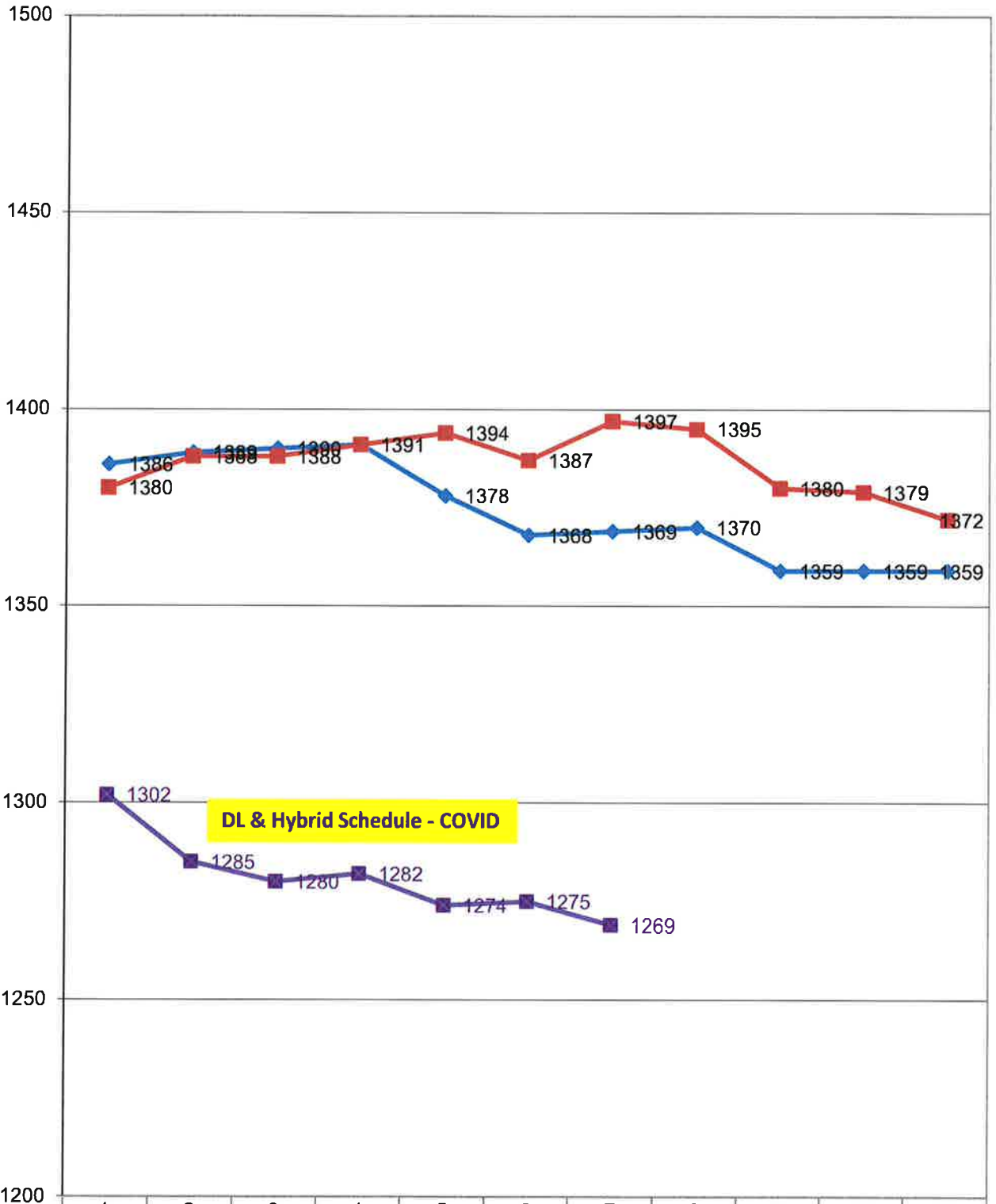
Enrollment Report for the number of students in February 9, 2021 will be presented to the Board for informational purposes only.

SUPERINTENDENT'S RECOMMENDATION:

None

												1/13/20	2/12/20
SCHOOL	K	1	2	3	4	5	6	7	8	Total			
Lone Tree	74	57	44	56	42	27				300		307	341
Home Based IS	2	2	1	5	1	2				13		12	
									LT Total	313		319	
Wheatland El	76	75	67	69						287		288	327
Home Based IS	3	3	4	3						13		14	
									WEL Total	300		302	
Bear River					81	77	115	129	127	529		527	607
Home Based IS					3	5	11	8	9	36		37	
									BR Total	565		564	
WCA	22	22	14	8	12	8				86		86	94
Home Based IS	1	1	1	0	0	2				5		4	
									WCA Total	91		90	
Non Public School										0		0	0
Total	178	160	131	141	139	121	126	137	136	1269		1275	1369
Previous Report	1275								TOTAL	1269			
Difference	-6								Difference between 19/20 & 20/21	-100			
PRESCHOOL	2/13/2021	1/13/21	2/12/20										
Wheatland PS	52	53	69										
Lone Tree PS	42	41	61										
Total PS	94	94	130										
Preschool difference between 19/20 & 20/21	-36												
2020/21 TOTAL with Reg Ed, NPS Charter & Preschool	1363			2019/20 TOTAL with Reg Ed, NPS Charter & Preschool	1499				Difference in Total Students between 19/20 & 20/21			-136	

2020-21 WSD Enrollment Chart



■ 2020/21	1302	1285	1280	1282	1274	1275	1269				
◆ 2019/20	1386	1389	1390	1391	1378	1368	1369	1370	1359	1359	1359
■ 2018/19	1380	1388	1388	1391	1394	1387	1397	1395	1380	1379	1372