

**WHEATLAND SCHOOL DISTRICT  
BOARD AGENDA ITEM**

CONSENT  
 ACTION  
 REPORT/INFORMATION

**BOARD MEETING DATE:** June 10, 2021  
**BOARD AGENDA NUMBER:** 2.2  
**BOARD AGENDA ITEM:** Enrollment Report  
**DEPARTMENT:** Superintendent's Office  
**CONTACT PERSON:** Craig M. Guensler

**REPORT/PROPOSAL**

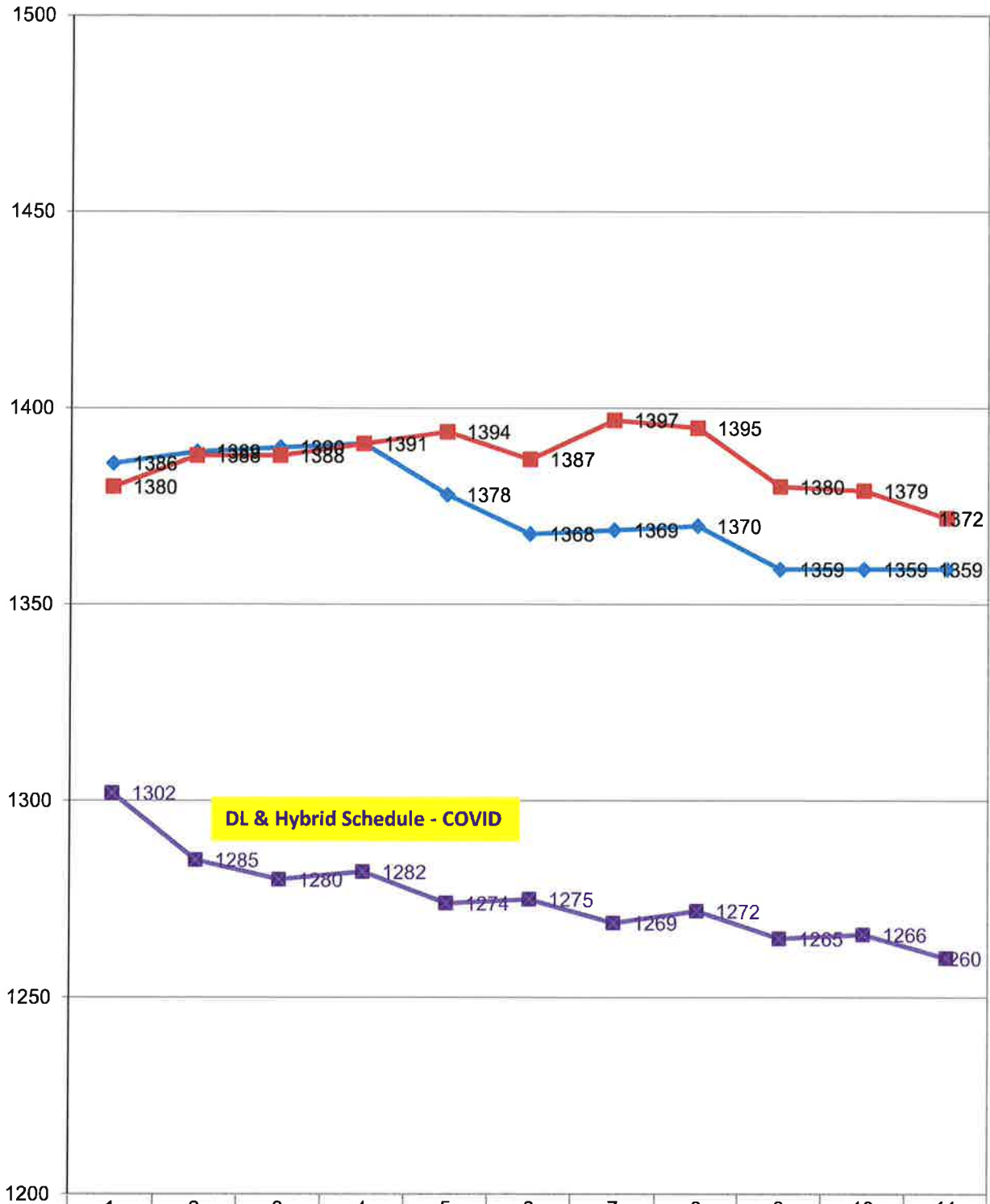
Enrollment Report for the number of students in June 2021 will be presented to the Board for informational purposes only.

**SUPERINTENDENT'S RECOMMENDATION:**

None

												5/12/21	5/14/20
SCHOOL	K	1	2	3	4	5	6	7	8	Total			
Lone Tree	78	56	43	54	41	24				296		298	
Home Based IS	2	2	1	4	1	2				12		12	
										<b>LT Total</b>	<b>308</b>	310	345
Wheatland El	77	77	70	71						295		296	
Home Based IS	2	2	3	2						9		9	
										<b>WEL Total</b>	<b>304</b>	305	323
Bear River					79	77	113	125	126	520		523	
Home Based IS					4	6	12	8	8	38		38	
										<b>BR Total</b>	<b>558</b>	561	598
WCA	22	21	12	8	14	8				85		85	
Home Based IS	1	1	1	0	0	2				5		5	
										<b>WCA Total</b>	<b>90</b>	90	93
Non Public School										0		0	
<b>Total</b>	<b>182</b>	<b>159</b>	<b>130</b>	<b>139</b>	<b>139</b>	<b>119</b>	<b>125</b>	<b>133</b>	<b>134</b>	<b>1260</b>		<b>1266</b>	<b>1359</b>
Previous Report	1266									TOTAL	1260		
Difference	-6									Difference between 19/20 & 20/21		-99	
<b>PRESCHOOL</b>	6/3/2021	5/12/21	4/14/20										
Wheatland PS	58	58	66										
Lone Tree PS	48	48	62										
<b>Total PS</b>	<b>106</b>	<b>106</b>	<b>128</b>										
Preschool difference between 19/20 & 20/21	-22												
<b>2020/21 TOTAL</b>	<b>1366</b>			<b>2019/20 TOTAL</b>	<b>1487</b>					<b>Difference in Total Students</b>		<b>-121</b>	
with Reg Ed, NPS Charter & Preschool				with Reg Ed, NPS Charter & Preschool						between 19/20 & 20/21			

2020-21 WSD Enrollment Chart



2020/21	1302	1285	1280	1282	1274	1275	1269	1272	1265	1266	1260
2019/20	1386	1389	1390	1391	1378	1368	1369	1370	1359	1359	1359
2018/19	1380	1388	1388	1391	1394	1387	1397	1395	1380	1379	1372