

**WHEATLAND SCHOOL DISTRICT
BOARD AGENDA ITEM**

CONSENT
 ACTION
 REPORT/INFORMATION

BOARD MEETING DATE: October 15, 2020
BOARD AGENDA NUMBER: 2.2
BOARD AGENDA ITEM: Enrollment Report
DEPARTMENT: Superintendent's Office
CONTACT PERSON: Craig M. Guensler

REPORT/PROPOSAL

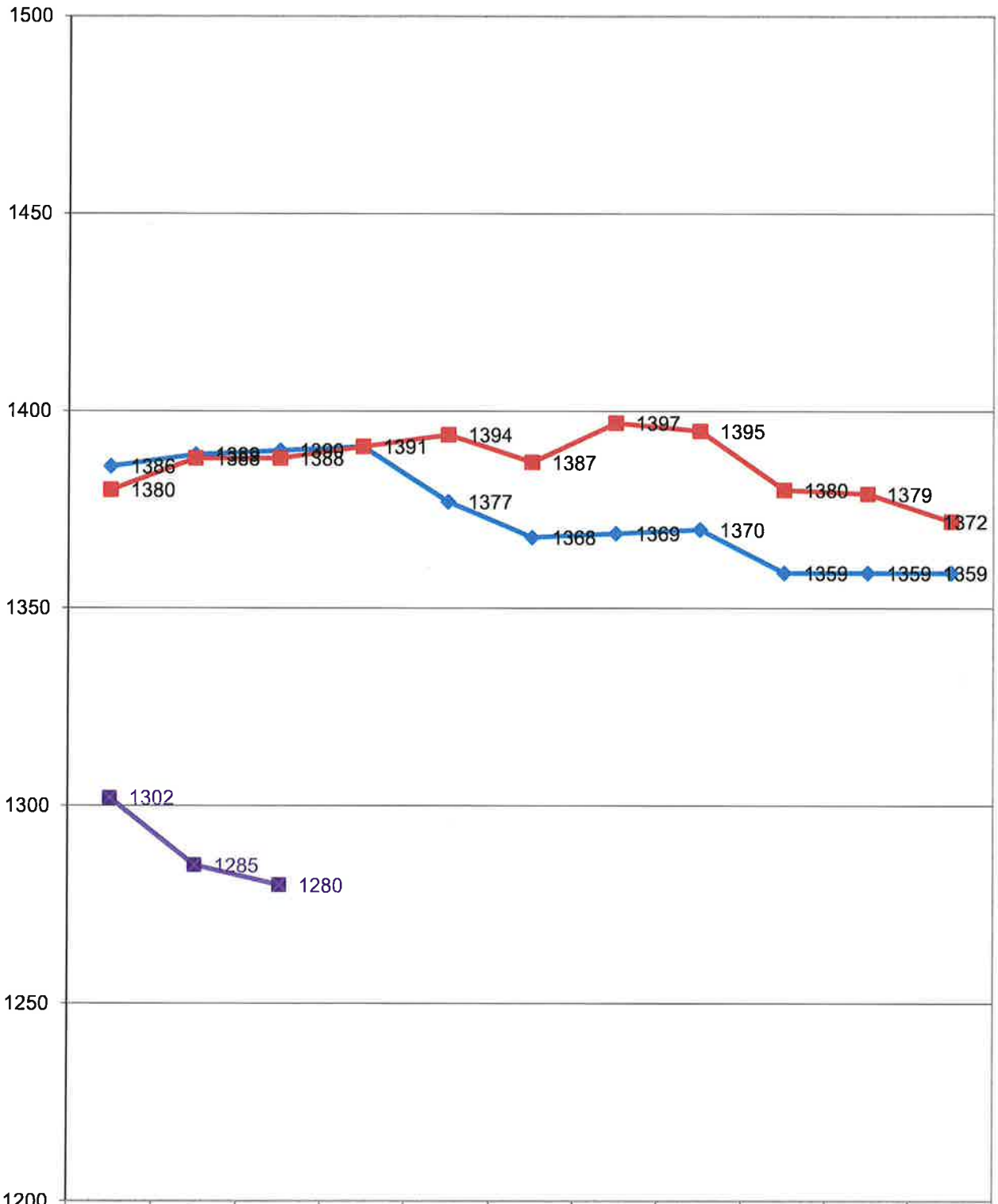
Enrollment Report for the number of students on October 7, 2020 will be presented to the Board for informational purposes only.

SUPERINTENDENT'S RECOMMENDATION:

None

												9/3/20	10/10/19
SCHOOL	K	1	2	3	4	5	6	7	8	Total			
Lone Tree	69	59	38	64	40	31				301		297	361
Home Based IS	7	4	3	5	4	0				23		27	
									LT Total	324		324	
Wheatland El	65	64	64	66						259		258	324
Home Based IS	10	13	7	3						33		36	
									WEL Total	292		294	
Bear River					84	76	117	138	127	542		536	613
Home Based IS					1	5	6	5	12	29		37	
									BR Total	571		573	
WCA	23	21	16	6	15	9				90		91	91
Home Based IS	0	1	1	0	0	1				3		3	
									WCA Total	93		94	
Non Public School										0		0	1
Total	174	162	129	144	144	122	123	143	139	1280		1285	1390
Previous Report	1285								TOTAL	1280			
Difference	-5								Difference between 19/20 & 20/21			-110	
PRESCHOOL	10/7/20	9/3/20	10/10/19										
Wheatland PS	51	50	67										
Lone Tree PS	37	37	66										
Total PS	88	87	133										
Preschool difference between 18/19 & 19/20	-45												
2020/21 TOTAL	1368			2019/20 TOTAL	1523				Difference in Total Students			-155	
with Reg Ed, NPS				with Reg Ed, NPS					between 19/20 & 20/21				
Charter & Preschool				Charter & Preschool									

2019-20 WSD Enrollment Chart



2020/21	1302	1285	1280								
2019/20	1386	1389	1390	1391	1377	1368	1369	1370	1359	1359	1359
2018/19	1380	1388	1388	1391	1394	1387	1397	1395	1380	1379	1372