

**WHEATLAND SCHOOL DISTRICT  
BOARD AGENDA ITEM**

CONSENT  
 ACTION  
 REPORT/INFORMATION

**BOARD MEETING DATE:** April 11, 2024  
**BOARD AGENDA NUMBER:** 2.2  
**BOARD AGENDA ITEM:** Enrollment Report  
**DEPARTMENT:** Superintendent's Office  
**CONTACT PERSON:** Craig M. Guensler

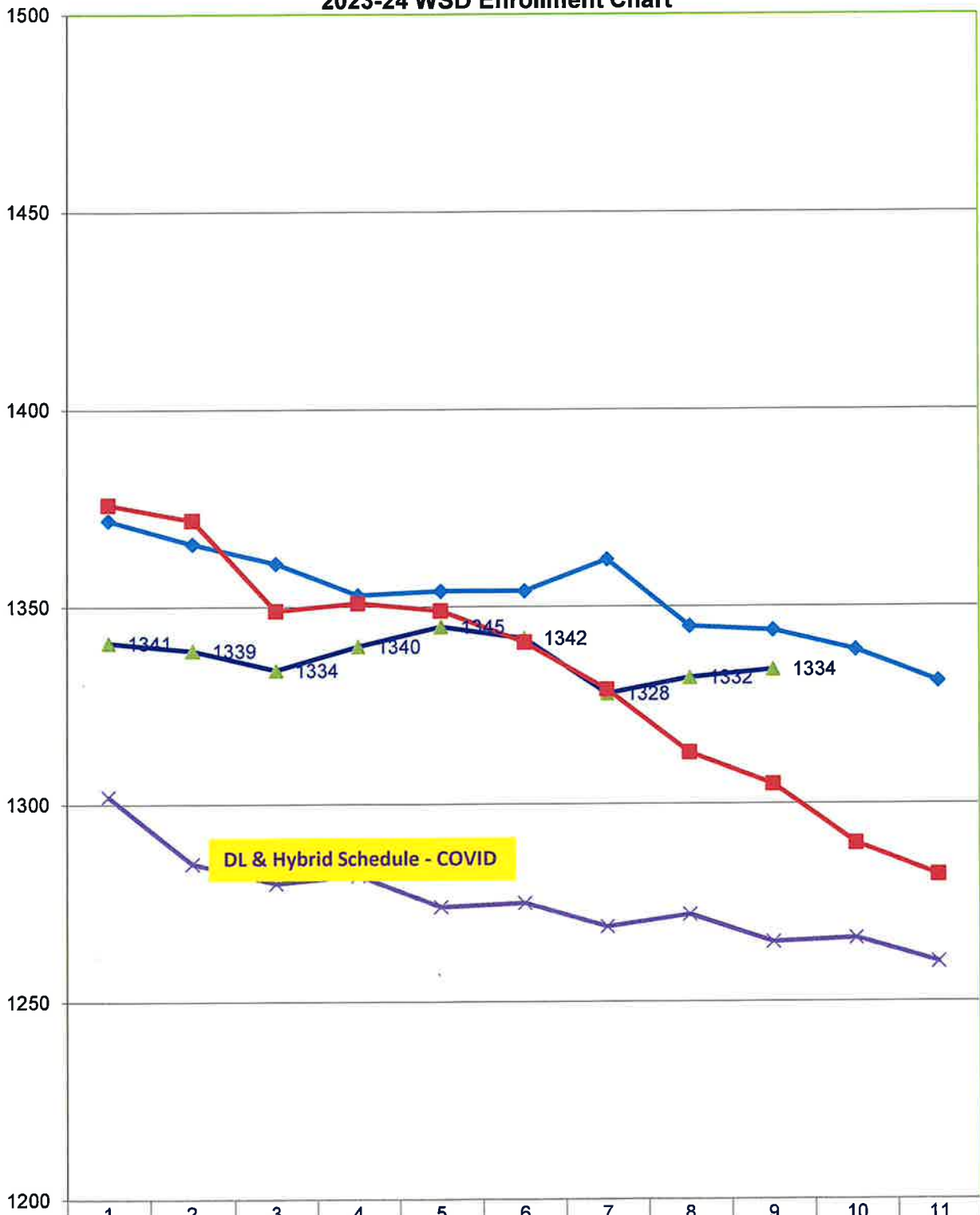
**REPORT/PROPOSAL**  
Enrollment Report for April 2, 2024

**SUPERINTENDENT'S RECOMMENDATION:**

None

												3/4/24	4/6/23
SCHOOL	TK	K	1	2	3	4	5	6	7	8	Total		
Lone Tree	19	68	51	55	44	43	38				318	316	338
										<b>LT Total</b>	<b>318</b>	<b>316</b>	<b>338</b>
Wheatland El	31	84	78	86	82						361	360	358
WSD SDC	3	0	3	0	3						9	9	9
PLESD SDC	0	2	2	1	2						7	7	6
										<b>WEL Total</b>	<b>377</b>	<b>376</b>	<b>373</b>
Bear River						91	79	135	138	110	553	553	545
WSD SDC						3	0	2	2	0	7	7	5
PLESD SDC						0	3	1	1	0	5	5	5
										<b>BR Total</b>	<b>565</b>	<b>565</b>	<b>555</b>
WCA	6	13	8	10	19	13	5				74	75	78
										<b>WCA Total</b>	<b>74</b>	<b>75</b>	<b>78</b>
NPS											0	0	0
<b>Total</b>	<b>59</b>	<b>167</b>	<b>142</b>	<b>152</b>	<b>150</b>	<b>150</b>	<b>125</b>	<b>138</b>	<b>141</b>	<b>110</b>	<b>1334</b>	<b>1332</b>	<b>1344</b>
Previous Report		1332								<b>TOTAL</b>	<b>1334</b>		
Difference		2								<b>Difference between 22/23 &amp; 23/24</b>	<b>-10</b>		
<b>PRESCHOOL</b>		4/2/2024	3/4/24	4/6/23									
Wheatland PS		49	47	56									
WSD PreK SDC		3	3	9									
PLESD PreK SDC		0	0	0									
Lone Tree PS		42	43	46									
<b>Total PS</b>		<b>94</b>	<b>93</b>	<b>111</b>									
Preschool difference between 22/23 & 23/24		-17											
<b>2023/24 TOTAL</b>		<b>1428</b>			<b>2022/23 TOTAL</b>	<b>1455</b>				<b>Difference in Total Students</b>	<b>-27</b>		
with Reg Ed, NPS Charter & Preschool					with Reg Ed, NPS Charter & Preschool					between 22/23 & 23/24			

2023-24 WSD Enrollment Chart



	1	2	3	4	5	6	7	8	9	10	11
2023/24	1341	1339	1334	1340	1345	1342	1328	1332	1334		
2022/23	1372	1366	1361	1353	1354	1354	1362	1345	1344	1339	1331
2021/22	1376	1372	1349	1351	1349	1341	1329	1313	1305	1290	1282
2020/21	1302	1285	1280	1282	1274	1275	1269	1272	1265	1266	1260