

**WHEATLAND SCHOOL DISTRICT
BOARD AGENDA ITEM**

CONSENT
 ACTION
 REPORT/INFORMATION

BOARD MEETING DATE: March 14, 2024
BOARD AGENDA NUMBER: 2.2
BOARD AGENDA ITEM: Enrollment Report
DEPARTMENT: Superintendent's Office
CONTACT PERSON: Craig M. Guensler

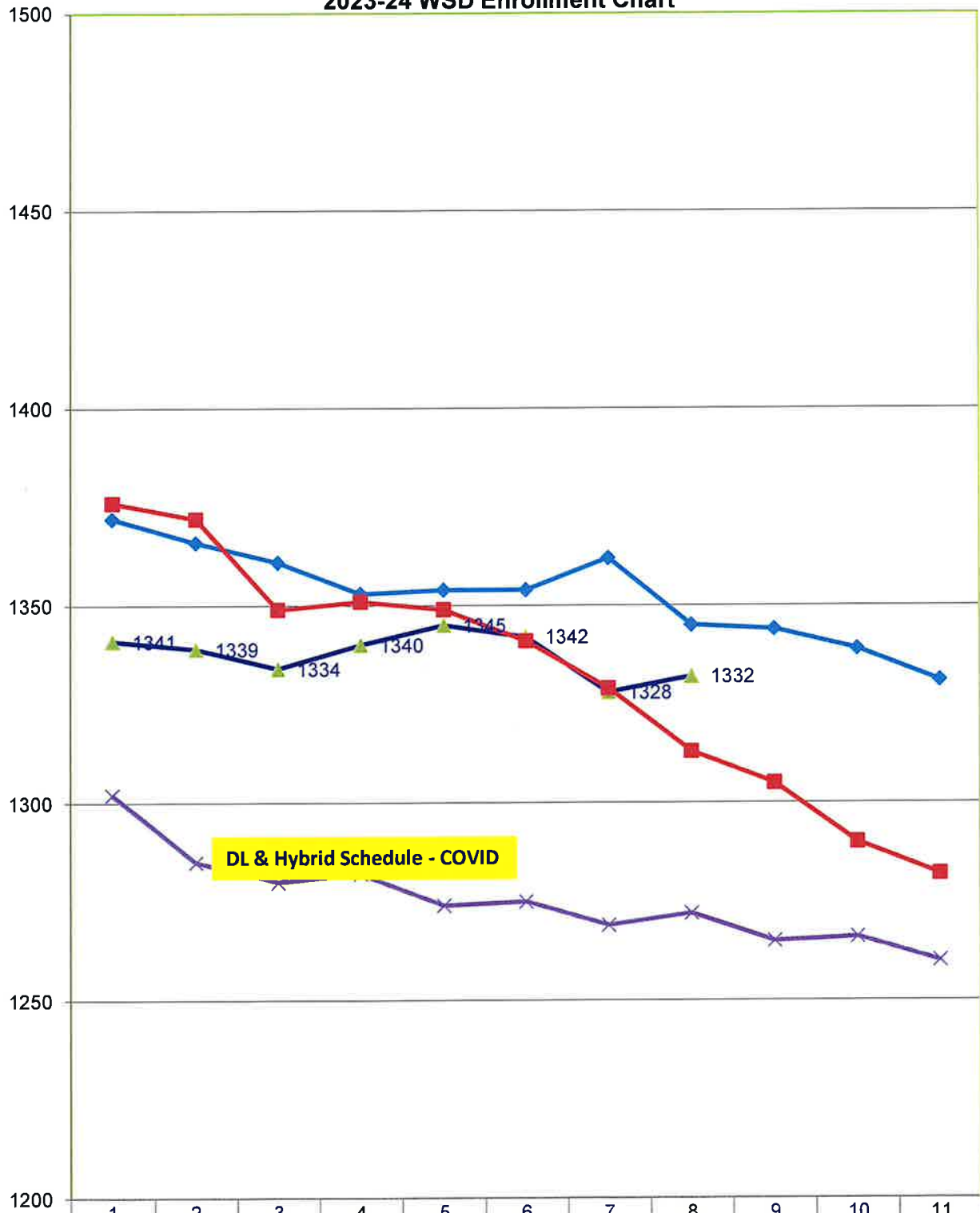
REPORT/PROPOSAL
Enrollment Report for March 4, 2024

SUPERINTENDENT'S RECOMMENDATION:

None

| | | | | | | | | | | | | 2/1/24 | 2/1/23 |
|---|-----------|-------------|------------|------------|------------|---|-------------|------------|------------|---|-------------|-------------|-------------|
| SCHOOL | TK | K | 1 | 2 | 3 | 4 | 5 | 6 | 7 | 8 | Total | | |
| Lone Tree | 19 | 69 | 52 | 55 | 43 | 42 | 36 | | | | 316 | 319 | 343 |
| | | | | | | | | | | LT Total | 316 | 319 | 343 |
| Wheatland El | 31 | 84 | 77 | 86 | 82 | | | | | | 360 | 350 | 356 |
| WSD SDC | 3 | 0 | 3 | 0 | 3 | | | | | | 9 | 10 | 9 |
| PLESD SDC | 0 | 2 | 2 | 1 | 2 | | | | | | 7 | 7 | 6 |
| | | | | | | | | | | WEL Total | 376 | 367 | 371 |
| Bear River | | | | | | 90 | 79 | 135 | 139 | 110 | 553 | 552 | 541 |
| WSD SDC | | | | | | 3 | 0 | 2 | 2 | 0 | 7 | 7 | 5 |
| PLESD SDC | | | | | | 0 | 3 | 1 | 1 | 0 | 5 | 5 | 4 |
| | | | | | | | | | | BR Total | 565 | 564 | 550 |
| WCA | 6 | 13 | 8 | 10 | 19 | 14 | 5 | | | | 75 | 78 | 81 |
| | | | | | | | | | | WCA Total | 75 | 78 | 81 |
| NPS | | | | | | | | | | | 0 | 0 | 0 |
| Total | 59 | 168 | 142 | 152 | 149 | 149 | 123 | 138 | 142 | 110 | 1332 | 1328 | 1345 |
| Previous Report | | 1328 | | | | | | | | TOTAL | 1332 | | |
| Difference | | 4 | | | | | | | | Difference between 22/23 & 23/24 | -13 | | |
| PRESCHOOL | 3/4/2024 | 2/1/24 | 2/1/23 | | | | | | | | | | |
| Wheatland PS | | 47 | 43 | 57 | | | | | | | | | |
| WSD PreK SDC | | 3 | 4 | 7 | | | | | | | | | |
| PLESD PreK SDC | | 0 | 0 | 0 | | | | | | | | | |
| Lone Tree PS | | 43 | 43 | 48 | | | | | | | | | |
| Total PS | | 93 | 90 | 112 | | | | | | | | | |
| Preschool difference between 22/23 & 23/24 | | -19 | | | | | | | | | | | |
| 2023/24 TOTAL | | 1425 | | | | 2022/23 TOTAL | 1457 | | | Difference in Total Students | | -32 | |
| with Reg Ed, NPS Charter & Preschool | | | | | | with Reg Ed, NPS Charter & Preschool | | | | between 22/23 & 23/24 | | | |

2023-24 WSD Enrollment Chart



| | 1 | 2 | 3 | 4 | 5 | 6 | 7 | 8 | 9 | 10 | 11 |
|---------|------|------|------|------|------|------|------|------|------|------|------|
| 2023/24 | 1341 | 1339 | 1334 | 1340 | 1345 | 1342 | 1328 | 1332 | | | |
| 2022/23 | 1372 | 1366 | 1361 | 1353 | 1354 | 1354 | 1362 | 1345 | 1344 | 1339 | 1331 |
| 2021/22 | 1376 | 1372 | 1349 | 1351 | 1349 | 1341 | 1329 | 1313 | 1305 | 1290 | 1282 |
| 2020/21 | 1302 | 1285 | 1280 | 1282 | 1274 | 1275 | 1269 | 1272 | 1265 | 1266 | 1260 |