

**WHEATLAND SCHOOL DISTRICT
BOARD AGENDA ITEM**

CONSENT
 ACTION
 REPORT/INFORMATION

BOARD MEETING DATE: June 10, 2025
BOARD AGENDA NUMBER: 2.2
BOARD AGENDA ITEM: Enrollment Report
DEPARTMENT: Superintendent's Office
CONTACT PERSON: Craig M. Guensler

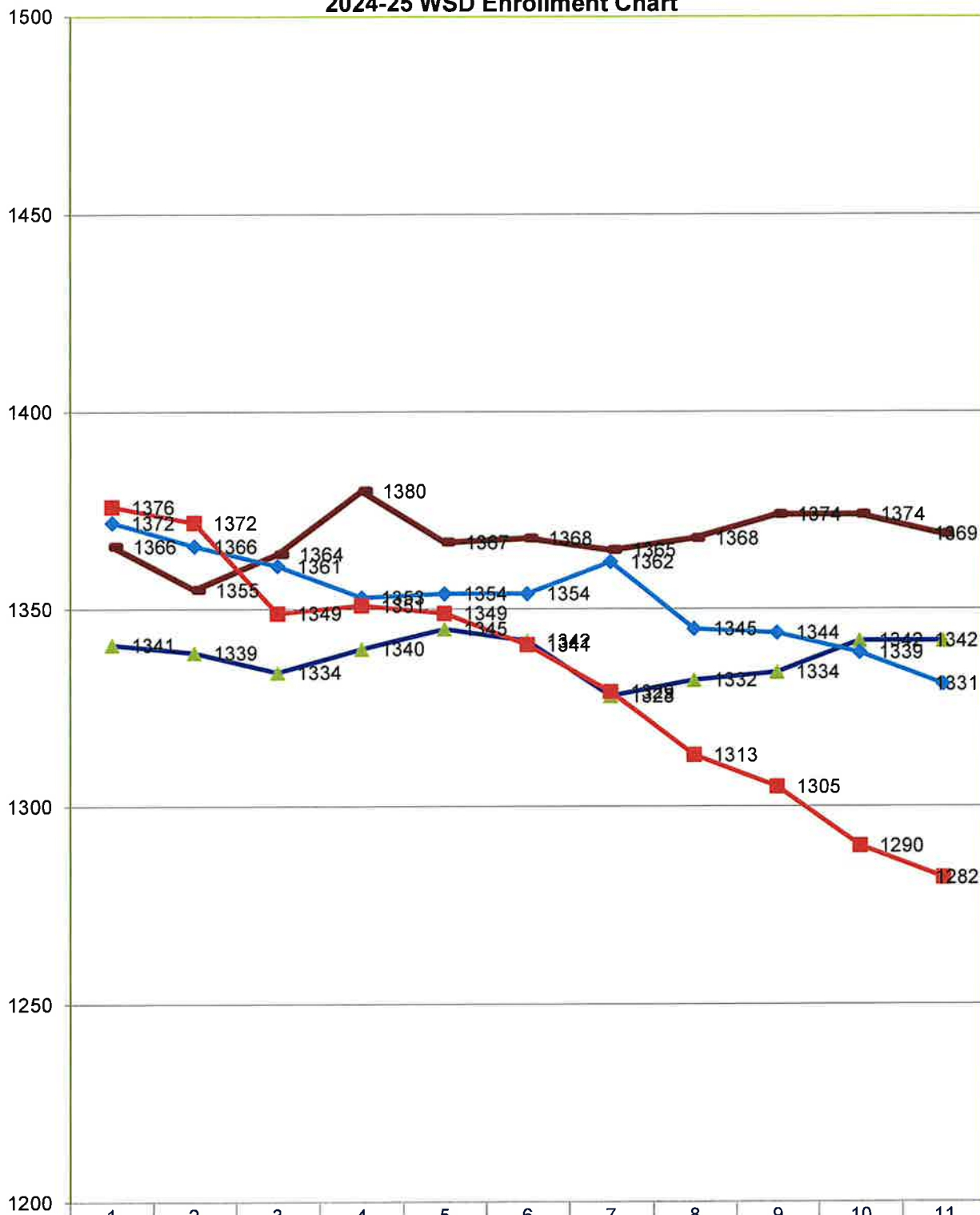
REPORT/PROPOSAL
Enrollment Report for June 2, 2025

SUPERINTENDENT'S RECOMMENDATION:

None

											5/8/25	6/1/24	
SCHOOL	TK	K	1	2	3	4	5	6	7	8	Total		
Lone Tree	28	50	46	51	39	34	44				292	293	318
										LT Total	292	293	318
Wheatland El	48	74	86	80	91						379	382	365
WSD SDC	2	2	1	3	2						10	10	9
PLESD SDC	1	1	3	2	2						9	9	7
										WEL Total	398	401	381
Bear River						89	96	121	134	140	580	581	558
WSD SDC						2	1	0	1	2	6	6	7
PLESD SDC						2	0	2	1	1	6	6	4
										BR Total	592	593	569
WCA	8	13	21	10	13	12	8				85	85	74
										WCA Total	85	85	74
Total SDC	3	3	4	5	4	4	1	2	2	3	31	31	
Non Public						1			1		2	2	0
Total	87	140	158	145	148	137	149	124	136	144	1369	1374	1342
Previous Report		1374								TOTAL	1369		
Difference		-5								Difference between 23/24 & 24/25		27	
PRESCHOOL		6/2/2025	5/8/25	6/1/24									
Wheatland PS		47	47	48									
WSD PreK SDC		6	6	3									
Lone Tree PS		42	42	41									
Total PS		95	95	92									
Preschool difference between 23/24 & 24/25		3											
2024/25 TOTAL with Reg Ed, NPS Charter & Preschool		1464				2023/24 TOTAL with Reg Ed, NPS Charter & Preschool	1434			Difference in Total Students between 23/24 & 24/25		30	

2024-25 WSD Enrollment Chart



	1	2	3	4	5	6	7	8	9	10	11
2024/25	1366	1355	1364	1380	1367	1368	1365	1368	1374	1374	1369
2023/24	1341	1339	1334	1340	1345	1342	1328	1332	1334	1342	1342
2022/23	1372	1366	1361	1353	1354	1354	1362	1345	1344	1339	1331
2021/22	1376	1372	1349	1351	1349	1341	1329	1313	1305	1290	1282