

**WHEATLAND SCHOOL DISTRICT
BOARD AGENDA ITEM**

CONSENT
 ACTION
 REPORT/INFORMATION

BOARD MEETING DATE: November 14, 2024
BOARD AGENDA NUMBER: 2.2
BOARD AGENDA ITEM: Enrollment Report
DEPARTMENT: Superintendent's Office
CONTACT PERSON: Craig M. Guensler

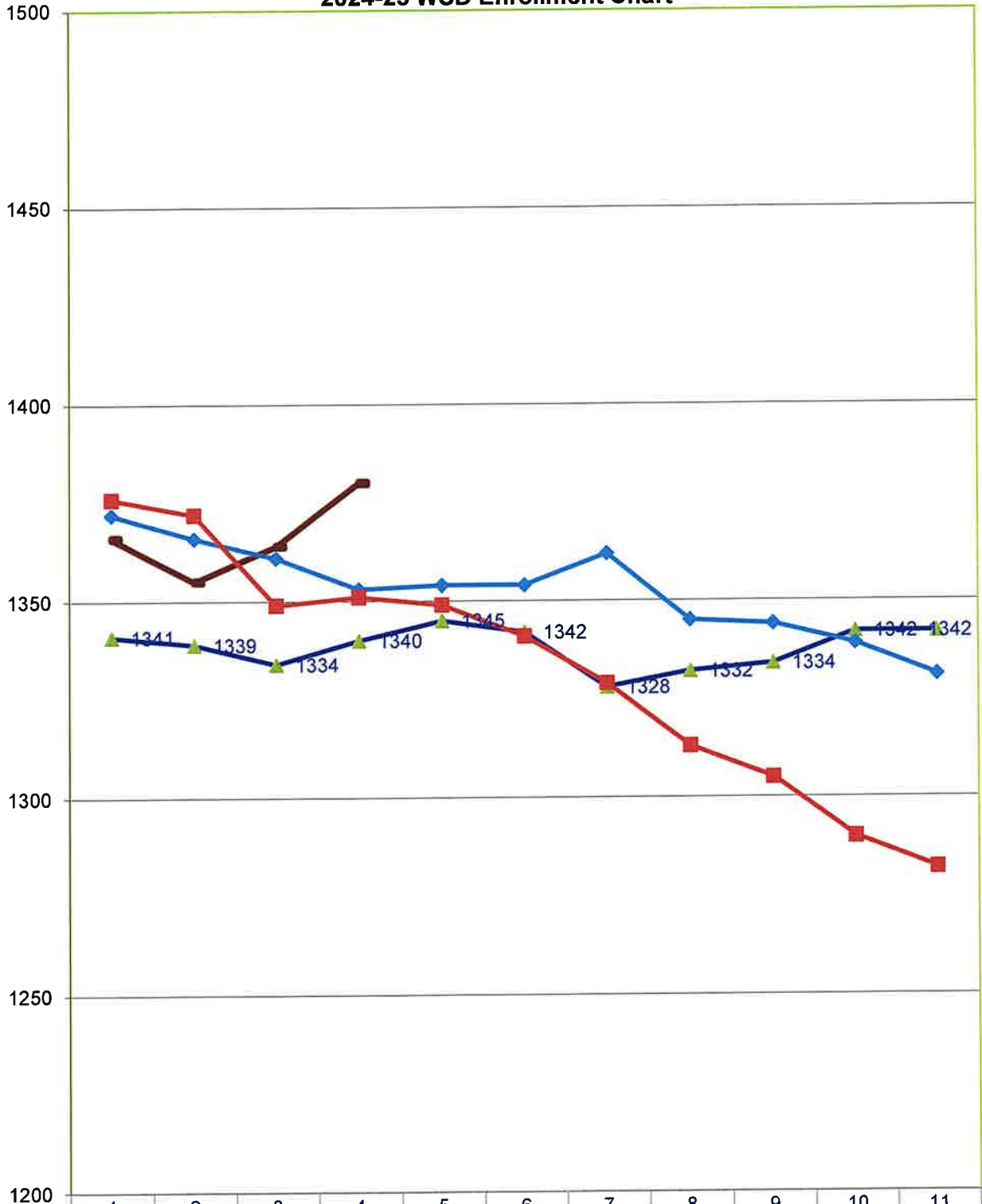
REPORT/PROPOSAL
Enrollment Report as of November 7, 2024

SUPERINTENDENT'S RECOMMENDATION:

None

												10/7/24	11/1/23
SCHOOL	TK	K	1	2	3	4	5	6	7	8	Total		
Lone Tree	28	54	47	52	43	39	48				311	306	324
										LT Total	311	306	324
Wheatland El	47	68	84	75	93						367	360	345
WSD SDC	2	4	1	5	1						13	13	11
PLESD SDC	0	1	3	2	2						8	8	6
										WEL Total	388	381	362
Bear River						87	94	125	131	139	576	572	555
WSD SDC						3	1	0	1	2	7	8	7
PLESD SDC						2	0	3	1	1	7	7	5
										BR Total	590	587	564
WCA	8	13	22	10	15	12	11				91	90	86
										WCA Total	91	90	86
Total SDC	2	5	4	7	3	5	1	3	2	3	35	34	29
Total	84	135	156	144	154	142	154	128	133	142	1380	1364	1340
Previous Report		1364								TOTAL	1380		
Difference		16										40	
PRESCHOOL		11/7/2024	10/7/24	11/1/23									
Wheatland PS		52	49	39									
WSD PreK SDC		2	1	3									
PLESD PreK SDC		0	0	0									
Lone Tree PS		43	43	40									
Total PS		97	93	82									
Preschool difference between 23/24 & 24/25		15											
2024/25 TOTAL		1477		2023/24 TOTAL	1422					Difference in Total Students		55	
with Reg Ed, NPS Charter & Preschool				with Reg Ed, NPS Charter & Preschool						between 22/23 & 23/24			

2024-25 WSD Enrollment Chart



	1	2	3	4	5	6	7	8	9	10	11
2024/25	1366	1355	1364	1380							
2023/24	1341	1339	1334	1340	1345	1342	1328	1332	1334	1342	1342
2022/23	1372	1366	1361	1353	1354	1354	1362	1345	1344	1339	1331
2021/22	1376	1372	1349	1351	1349	1341	1329	1313	1305	1290	1282