

**WHEATLAND SCHOOL DISTRICT  
BOARD AGENDA ITEM**

CONSENT  
 ACTION  
 REPORT/INFORMATION

**BOARD MEETING DATE:** October 10, 2024  
**BOARD AGENDA NUMBER:** 2.2  
**BOARD AGENDA ITEM:** Enrollment Report  
**DEPARTMENT:** Superintendent's Office  
**CONTACT PERSON:** Craig M. Guensler

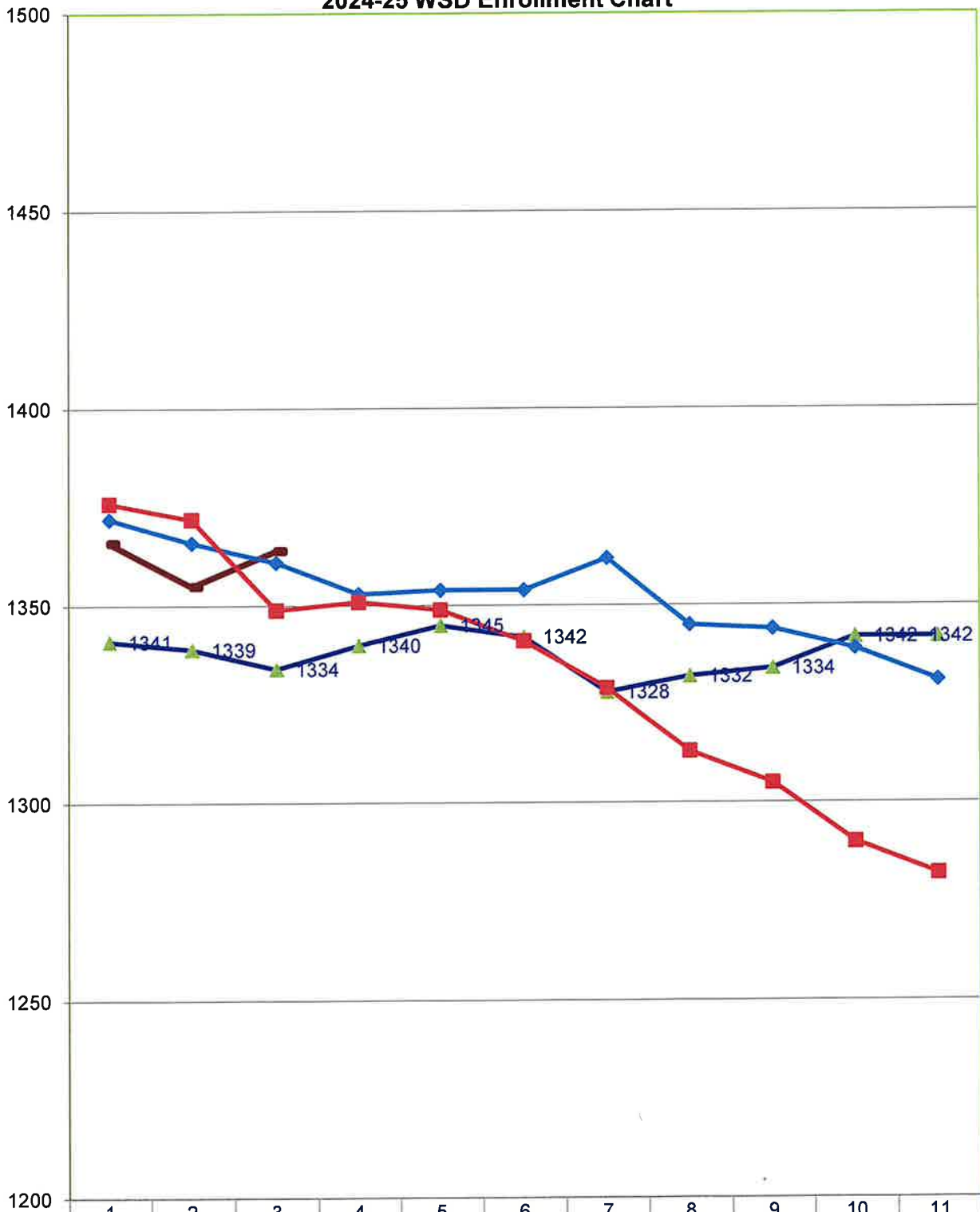
**REPORT/PROPOSAL**  
Enrollment Report as of October 7, 2024

**SUPERINTENDENT'S RECOMMENDATION:**

None

												9/1/24	10/11/23
SCHOOL	TK	K	1	2	3	4	5	6	7	8	Total		
Lone Tree	26	53	46	50	43	39	49				306	301	320
										<b>LT Total</b>	<b>306</b>	<b>301</b>	<b>320</b>
Wheatland El	47	65	83	74	91						360	359	347
WSD SDC	2	4	1	5	1						13	12	11
PLESD SDC	0	1	3	2	2						8	8	6
										<b>WEL Total</b>	<b>381</b>	<b>379</b>	<b>364</b>
Bear River						87	95	121	133	136	572	572	552
WSD SDC						3	1	0	2	2	8	8	7
PLESD SDC						2	0	3	1	1	7	7	5
										<b>BR Total</b>	<b>587</b>	<b>587</b>	<b>564</b>
WCA	9	12	23	10	15	11	10				90	88	86
										<b>WCA Total</b>	<b>90</b>	<b>88</b>	<b>86</b>
Total SDC	2	2	5	7	3	5	1	3	3	3	34	35	29
<b>Total</b>	<b>84</b>	<b>135</b>	<b>156</b>	<b>141</b>	<b>152</b>	<b>142</b>	<b>155</b>	<b>124</b>	<b>136</b>	<b>139</b>	<b>1364</b>	<b>1355</b>	<b>1334</b>
Previous Report		1355								<b>TOTAL</b>	<b>1364</b>		
Difference		9										<b>30</b>	
<b>PRESCHOOL</b>	10/7/2024	9/4/24	10/11/23										
Wheatland PS		49	48	37									
WSD PreK SDC		1	3	2									
PLESD PreK SDC		0	0	0									
Lone Tree PS		43	45	42									
<b>Total PS</b>		<b>93</b>	<b>96</b>	<b>81</b>									
Preschool difference between 23/24 & 24/25		12											
<b>2024/25 TOTAL</b>		<b>1457</b>		<b>2023/24 TOTAL</b>	<b>1415</b>					<b>Difference in Total Students</b>		<b>42</b>	
with Reg Ed, NPS Charter & Preschool				with Reg Ed, NPS Charter & Preschool						between 22/23 & 23/24			

2024-25 WSD Enrollment Chart



	1	2	3	4	5	6	7	8	9	10	11
2024/25	1366	1355	1364								
2023/24	1341	1339	1334	1340	1345	1342	1328	1332	1334	1342	1342
2022/23	1372	1366	1361	1353	1354	1354	1362	1345	1344	1339	1331
2021/22	1376	1372	1349	1351	1349	1341	1329	1313	1305	1290	1282