

**WHEATLAND SCHOOL DISTRICT
BOARD AGENDA ITEM**

CONSENT
 ACTION
 REPORT/INFORMATION

BOARD MEETING DATE: September 12, 2024
BOARD AGENDA NUMBER: 2.2
BOARD AGENDA ITEM: Enrollment Report
DEPARTMENT: Superintendent's Office
CONTACT PERSON: Craig M. Guensler

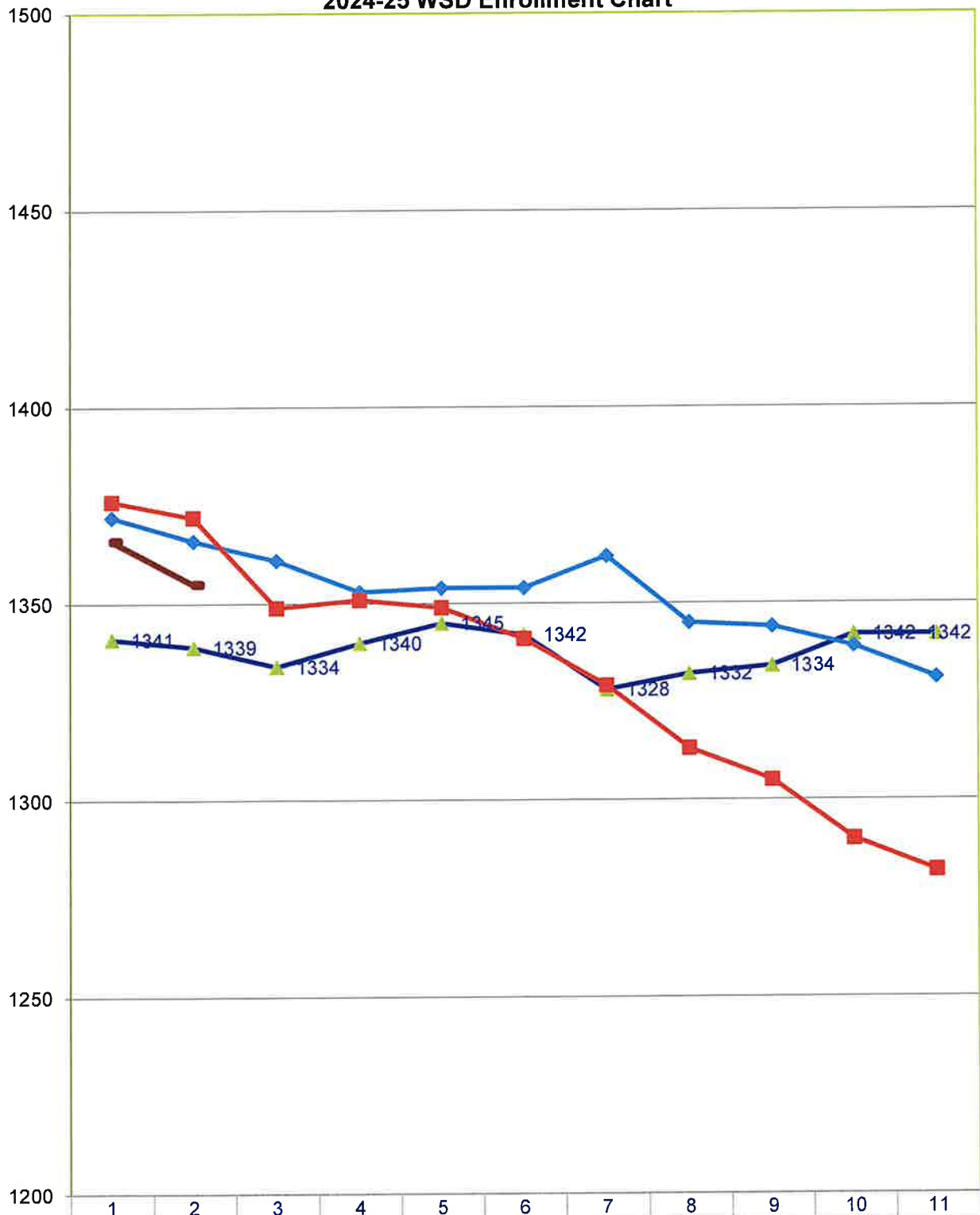
REPORT/PROPOSAL
Enrollment Report as of September 4, 2024

SUPERINTENDENT'S RECOMMENDATION:

None

												8/1/24	9/7/23
SCHOOL	TK	K	1	2	3	4	5	6	7	8	Total		
Lone Tree	26	50	47	49	41	40	48				301	300	322
										LT Total	301	300	322
Wheatland El	46	64	83	74	92						359	371	347
WSD SDC	2	4	0	5	1						12	8	11
PLESD SDC	0	1	3	2	2						8	8	6
										WEL Total	379	387	364
Bear River						87	95	121	133	136	572	580	552
WSD SDC						3	1	0	2	2	8	7	7
PLESD SDC						2	0	3	1	1	7	7	5
										BR Total	587	594	564
WCA	9	12	23	10	15	10	9				88	85	89
										WCA Total	88	85	89
Total SDC	3	2	5	7	3	5	1	3	3	3	35	30	30
Total	83	131	156	140	151	147	153	124	136	139	1355	1366	1327
Previous Report		1366								TOTAL	1355		
Difference		-11								Difference between 23/24 & 24/25	28		
PRESCHOOL		9/4/2024	8/1/24	9/7/23									
Wheatland PS		48	40	39									
WSD PreK SDC		3	1	3									
PLESD PreK SDC		0	0	0									
Lone Tree PS		45	38	43									
Total PS		96	79	85									
Preschool difference between 23/24 & 24/25		11											
2024/25 TOTAL		1451				2023/24 TOTAL	1412			Difference in Total Students	39		
with Reg Ed, NPS Charter & Preschool						with Reg Ed, NPS Charter & Preschool				between 22/23 & 23/24			

2024-25 WSD Enrollment Chart



	1	2	3	4	5	6	7	8	9	10	11
2024/25	1366	1355									
2023/24	1341	1339	1334	1340	1345	1342	1328	1332	1334	1342	1342
2022/23	1372	1366	1361	1353	1354	1354	1362	1345	1344	1339	1331
2021/22	1376	1372	1349	1351	1349	1341	1329	1313	1305	1290	1282